

MANNERS COMPOSITE STOCKS
MCS
THE STANDARD FOR STRENGTH



2014
PRODUCT CATALOG

TACTICAL STOCKS

THE STANDARD FOR STRENGTH

MCS-T4/T4A



A lot of work went into developing our tactical series stocks. They were designed with an ultimate goal in mind, ruggedness, stability, accuracy, and ergonomics. These stocks are engineered for the correct stiffness to weight ratio using state of the art processes during manufacturing.

MCS-T

One of our first stocks, still in high demand the MCS-T, here in Desert Sand.

The outer shells are made with 35% aircraft grade carbon fiber and 65% fiber glass in multiple layers. They are hand laid with high temperature epoxy resins, placed under a vacuum, and heat cured to obtain the perfect resin to fabric weight ratio. Standard configuration stocks come fully inletted with a Pachmayr pad installed and a set of pillars that are ready to install at time of bedding.

All of our tactical stocks come standard with a premium painted finish in a solid color of your choice. We also offer most models in a molded in field-grade gel coat finish.



MCS-T3

MCS-T2/T2A

A complete list of finish options can be found on the Colors and Finishes page of our this brochure and our website www.mannersstocks.com.



MCS-T5/T5A



MCS-T6/T6A

The 2013 addition to our tactical stock lineup, the T6 and T6A (adjustable cheek piece), here in Forest finish.

ELITE TACTICAL SHELL

NEW FOR 2014



MCS-T2A ELITE TACTICAL
CLEAR *Shown with optional High Gloss finish.*

**100% CARBON FIBER
SUPER LIGHT & STRONG**

Manners Composite Stocks is proud to introduce a new lay-up option for our tactical line of stocks. It will be called the Elite Tactical shell option.

This is basically the same technology and 100% carbon fiber shell that comes standard in our Elite Hunter series of stocks, but with a bit of old school twist to it. This option is available in all our tactical stocks including the folders. Back when we started Manners Stocks, some of the first stocks that we produced were clear carbon fiber. Today the Elite Tactical Option, incorporates some of the clear finish into the camo pattern.

In 2014 we offer this option in 4 different finishes, Elite GAP Camo, Elite Midnight Camo, Elite Black Forest Camo and Elite Clear. All of these finishes will be considered a field grade finish, what this means is that small imperfections may be visible in the finish such as mold lines, small sanding marks and fabric imperfections in the carbon fiber fabric.

The Elite Tactical stocks will also come standard with our tough armor grip and textured clear finish over the top.

ELITE TACTICAL
CLEAR Show in a Standard finish.



ELITE TACTICAL
GAP CAMO



Elite Tactical option is here shown on the MCS-T line of stocks.

ELITE TACTICAL
MIDNIGHT



ELITE TACTICAL
BLACK FOREST



TACTICAL FOLDER

The goal of this project was to create a lightweight, super strong folding stock, with a rock solid hinge lock up. We feel that we have got pretty close to that. The weights of the completed stocks are 4.5 to 5.1 lbs.

New for 2014, we are offering all of our folders in a fixed cheek version, and they will also be available in the new Elite Tactical shell option.

When purchased with this light weight option, the stock will have the same basic hinge design, but will be manufactured out of 7075 aluminum that is Mil spec hard coated. The weight of the Elite Folders will range 2.4 to 2.8 lbs for the non adjustable cheek version and 3.4 to 3.8 lbs for the adjustable.



ELITE HUNTER SERIES

100% Carbon Fiber
Great Ergonomics
Rugged, Strong, Lightweight
Lifetime Warranty

The ultimate goal while developing the Elite Hunter series was for the stocks to be as light as possible but still maintain the ruggedness, stability, accuracy and ergonomics of the rest of our lineup.

The composite industry in the past has always been driven by aerospace technology, but for the past few years there has been a lot of advancements in the wind energy market. We are taking some of these advancements in materials and ideas and we are developing a new process for the Elite Hunter series from lay up to fill.



MCS-EHSL
25 - 28 oz.

MCS-EHI
26 - 27 oz.



MCS-EH3
24 - 26 oz.



MCS-EHT TIKKA
23 - 26 oz.



MCS-EHS2
25 - 26 oz.



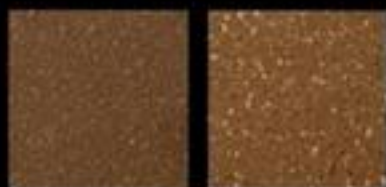
MCS-EHS4
24 - 26 oz.

MOLDED-IN COLORS



woodland midnight gap desert sage desert mud forest

PAINTED 3-COLOR SPECKLE



forest hunter desert hunter

ELITE TACTICAL



clear gap midnight black forest

PAINTED SOLID



desert sand coyote tan earth brown od green leaf green flat black

Manners Composite Stocks has become known in the industry as the top of the line manufacturer for super strong, stiff, light weight stocks. Our product line includes tactical, hunting and World Record holding competition stocks.

Our stocks are designed with an ultimate goal in mind, ruggedness, stability, accuracy, and ergonomics. This is achieved with state of the art manufacturing process and space age materials. Every item that we manufacture is engineered to exceed any type of abuse that you can put it through.

To back this up, each item has a lifetime 100% satisfaction guarantee and the best customer service in the industry.



Manners Composite Stocks

1232 Swift, North Kansas City, Mo. 64116

p: (816) 283-3334 • f: (816) 283-7244

mannersstocks.com
mannersstocks@yahoo.com