



Order # 4968738 - Cal Zant - EF

Fan #2 DU240HRA (372 lbs./29 curb)

Tag: 4000-7000 CFM

High Speed Direct Drive Centrifugal Upblast Exhaust Fan with disconnect switch and 24" wheel.

**Exhaust Motor:**

Model 00309ET3E215T-W22, 3.000 HP, 3 Phs, 208 V, 60Hz, 10.1 FLA, TEFC, Premium (E-Plus3) Eff.

**Exhaust Performance:**

Volume: 4000 cfm

RPM: 563

TS: 3648 ft/min

SP: 0.233" w.g.

+ 0.233" Opt.

BHP: 0.465

Discharge Velocity: 909 FPM

Altitude: 3262'

Ambient Temp: 120°F

**Exhaust Installation Information:**

Unit Main Input: 41.3 Amps MCA, 50 Amps MOP, 208 V, 8 AWG Wire Min.

Exhaust Unit Voltage: 1 phs 208 V 60Hz

SCCR: 10 kAmp



**Construction Features**

Housing constructed of heavy gauge aluminum • Centrifugal backward inclined, non-overloading wheel built out of 3003-H14 aluminum • Weatherproof safety disconnect switch • Grease spout welded to housing • Vibration isolators • Adjustable pitch drive assemblies • Adjustable motor mount • Ball bearing motors • Forces fresh air through motor to ensure long motor life • Corrosion resistant fasteners • High heat operation (300 °F) • Rated for restaurant and general ventilation applications • Grease classification tested • UL705 and UL762 •

**Curb & Supports:**

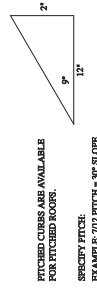
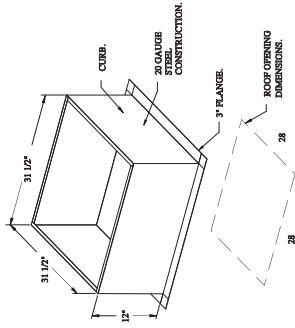
ROOF CURB - 31.50" Square X 12" High

**Selected Options:**

- Gravity Back Draft Damper - with flange, damper is 27" sq., 2" deep, O.D. of flange is 29" sq.
- VAV (Variable-Air-Volume) Wiring Package for Commercial Fans. Manual Speed Control Variable Frequency Drive Included
- Exhaust Variable Frequency Drive - 10 HP Max., 200/240 V, Three Phase, 29.0 A Max., NEMA 1 Enclosure, (Default Shipped Loose for Field Installation) PART NEEDS PROGRAMMING
- VFD factory mounted and wired in unit control vestibule.
- VFD Mounting bracket for DU/DR 240.
- Insulated Heat Baffle for Exhaust Fans. Type 475FRK 1 inch thick insulation installed on the top side of the top plate and under the motor of upblast and downblast fans. Cut to fit shaft wrapper and around vibration isolators and motor cooling hole. Caulked down to top plate.
- Bird Screen - 1/2" x 1/2" Wire Screen for Belt Drive Upblast & Downblast Fans

**Option B: 4,000 - 7,000 CFM**

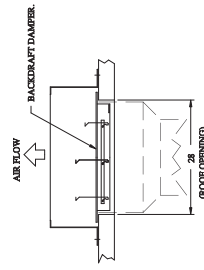
**~\$3,200 plus tax**



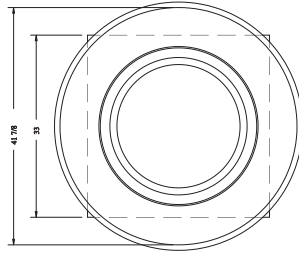
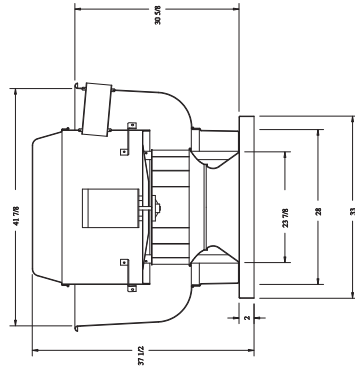
FITCHED CURBS ARE AVAILABLE FOR FITCHED ROOFS.

SPECIFY FITCH: 1/2\"/>

**BACKDRAFT DAMPER INSTALLATION**



- FEATURES:**
- DIRECT DRIVE CONSTRUCTION (NO BELT/PELLETS)
  - ROOF MOUNTED FANS
  - CURB
  - VARIABLE SPEED CONTROL
  - THERMAL OVERLOAD PROTECTION (SINGLE PHASE)
  - THERMAL OVERLOAD PROTECTION (THREE PHASE)
  - NEMA 3R SAFETY DISCONNECT SWITCH



**TOP VIEW**